

SmartLF All-in-One



EASY-TO-USE SCANNING, COPYING AND EMAILING SOFTWARE

SmartLF is a simple to use, multi-purpose software application that allows any **SmartLF** scanner user to scan to JPEG, TIFF and PDF. You can also copy to any windows printer and email alongside any Microsoft compatible email client.

User Friendly Software

Every Colortrac SmartLF scanner comes complete with the software to get you scanning and printing straight out of the box! Simply switch on the scanner, install the windows scanner driver and Colortrac SmartLF – this versatile application covers all basic scanning requirements.

SmartLF software has been developed to enable new or experienced users to produce digital files in regular file formats like JPEG, TIFF and PDF and to be able to create copies using the normal Windows drivers from their own office printers. SmartLF is designed for ease of use with an intuitive user interface, this means that your 'straightforward' jobs are literally completed by anyone at the click of a button.

Software User Interface

Large and clear main function buttons make operation simple for even the inexperienced user. We have avoided using technical language where possible in favour of more readily understood terms i.e 'Detail' in favour of 'Resolution'. Variable settings such as paper size, detail, colour mode etc. which are all common to the three main scanner functions are grouped in an easily accessible window. There is even an animated document icon to give the user a visual cue when to place the next original in the scanner.

File Formats

PDF (Adobe Portable Document Format), JPEG or TIFF provide the user with a versatile choice of the most commonly used formats in today's working environment. The SmartLF PDF and JPEG settings will produce the optimal compromise between quality and manageable file size.

Copying from SmartLF

Couldn't be easier! SmartLF enables you to quickly and easily print your scanned original to your normal office printer via the Windows printer drivers. Just enter the relevant paper size and orientation details in the print dialog box and click the button!

Feature Summary

- Automatic document batch processing
- Document auto-size detection, fixed sheet size or full width size options
- Crop and zoom image during scanning process
- *start and stop* all main scan processes from the SmartLF scanner keypad or screen
- Single controls on scanner panel for main functions
- Intelligently manage file overwrite situations using only the keyboard
- Large clear filename overwrite screen
- Works with any large or small format Windows driven printer
- Advanced image processing to tackle a broad range of documents
- Attach mono or small colour scans to emails
- Produce colour optimised PNG scans using *Prescan 256 auto colour mode*

SmartLF All-in-One

EASY-TO-USE SCANNING, COPYING AND EMAILING SOFTWARE

SmartLF All-in-One

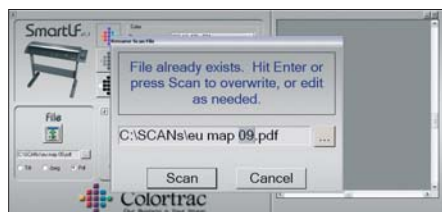
Supplied SmartLF Scanning and Copying Software for ARCHITECTS | ENGINEERS | CONSTRUCTION | CAD | GIS | BUILDING SERVICES
| FACILITIES MANAGEMENT | GENERAL OFFICE USE



Using **SmartLF** software is easy...

at the computer:

1. Switch on the scanner, wait for 'Ready' to display then start SmartLF
2. For a colour image click the large colour icon
3. Select the closest paper size to your original or choose auto-size
4. Select the orientation – landscape or portrait
5. Choose the required file format – PDF, JPEG or TIFF



at the scanner:

1. Insert the document for scanning
2. Press FILE or COPY on the scanner keypad



Colortrac Mini Movies

Colortrac has the widest range of video demos. See Colortrac SmartLF large format scanners and scanning software in operation on our web site. What you see is what you get!

File formats supported:

full colour	256 auto colour	greyscale	black & white
JPEG ¹	PNG ⁴	JPEG ⁵	TIFF-G4 ⁸
PDF ²		PDF ⁶	PDF ⁹
TIFF ³		TIFF ⁷	TIFF ¹⁰

- 1 Lossy 24-bit format with fixed level of compression providing good image quality and file size reduction
- 2 Conforms to the Adobe standard. Using Lossy JPEG compression as 1.
- 3 Uncompressed 24-bit format
- 4 Compressed lossless indexed 8-bit format for 256 colour images
- 5 Lossy 8-bit Greyscale compressed format
- 6 Conforms to Adobe standard. Uses JPEG compression as 5.
- 7 Uncompressed 8-bit Greyscale format
- 8 Highly compressed lossless 1-bit binary/bitonal format
- 9 Conforms to Adobe standard. Uses TIFF-G4 as 8. inside PDF wrapper
- 10 Uncompressed 1-bit black & white format

Colortrac Ltd makes no warranty of any kind with respect to the information contained in this document and reserves the right to change specifications without notice. Colortrac and Smart LF[®] are trademarks of Colortrac Ltd. All other trademarks are the property of their respective owners. Copyright © 2009 Colortrac Ltd.

COLORTRAC LIMITED
COLORTRAC HQ AND FACTORY
3-5 Brunel Court
Burrell Road
St Ives, Cambs
PE27 3LW, UK
Tel: +44 1480 464618
Fax: +44 1480 464620

COLORTRAC INC
4431-A Brookfield Corporate Drive
Chantilly, Virginia 20151, USA
Tel: +1 703 717 5631
Fax: +1 703 717 5361

COLORTRAC LTD BEIJING
Room 4-B1B, Building No. 7, Section 3, Century City
HaiDian District, Beijing 100089, P.R. China
Tel: +86 1051 988928 Fax: +86 1051 988927

www.colortrac.com



Colortrac
Our Business is Your Image